

Support Unit FK (fixed-side round type)

Order Coding	Model No.	Surface treatment	Applicable ballscrew accuracy grade	Bearing
FK05_C7	FK05	Black Oxide	C7	605
FK05_C7N		Electroless Nickel Plating	C7	605
FK06_C7	FK06	Black Oxide	C7	606
FK06_C5			C5	706A P0
FK06_C3			C3	706A P5
FK06_C7N		Electroless Nickel Plating	C7	606
FK06_C5N			C5	706A P0
FK06_C3N			C3	706A P5
FK08_C7	FK08	Black Oxide	C7	608
FK08_C5			C5	708A P0
FK08_C3			C3	708A P5
FK08_C7N		Electroless Nickel Plating	C7	608
FK08_C5N			C5	708A P0
FK08_C3N			C3	708A P5
FK10_C7	FK10	Black Oxide	C7	7000A P0
FK10_C5			C5	
FK10_C3			C3	7000A P5
FK10_C7N		Electroless Nickel Plating	C7	7000A P0
FK10_C5N			C5	
FK10_C3N			C3	7000A P5
FK12_C7	FK12	Black Oxide	C7	7001A P0
FK12_C5			C5	
FK12_C3			C3	7001A P5
FK12_C7N		Electroless Nickel Plating	C7	7001A P0
FK12_C5N			C5	
FK12_C3N			C3	7001A P5
FK15_C7	FK15	Black Oxide	C7	7002A P0
FK15_C5			C5	
FK15_C3			C3	7002A P5
FK15_C7N		Electroless Nickel Plating	C7	7002A P0
FK15_C5N			C5	
FK15_C3N			C3	7002A P5



Black Oxide (Application : General case)



Electroless Nickel Plating (Application : Clean room)

- (Note) :
1. FK05-FK08
(Using deep groove ball bearings for FK05 to FK08 C7 types Support Units , Which only be applied to light load , and Max. axial clearance is around 0.03mm.)
 2. FK10-FK30
(Using angular contact ball bearings without preload for FK10 to FK30 C7 types Support Units , and Max. axial clearance is 0.018mm.)
 3.
(Bearings make Preload for C5 type support units , and Axial clearance is 0 mm..)
 4.
(All of bearings use Japanese brand bearings.)

Support Unit FK (fixed-side round type)

Order Coding	Model No.	Surface treatment	Applicable ballscrew accuracy grade	Bearing	
FK17_C7	FK17	Black Oxide	C7	7203A P0	
FK17_C5			C5	7203A P0	
FK17_C3			C3	7203A P5	
FK17_C7N		Electroless Nickel Plating	C7	7203A P0	
FK17_C5N			C5	7203A P0	
FK17_C3N			C3	7203A P5	
FK20_C7	FK20	Black Oxide	C7	7204A P0	
FK20B_C7			C7	7204B P0	
FK20_C5			C5	7204A P0	
FK20B_C5			C5	7204B P0	
FK20_C3			C3	7204A P5	
FK20_C7N			Electroless Nickel Plating	C7	7204A P0
FK20B_C7N		C7		7204B P0	
FK20_C5N		C5		7204A P0	
FK20B_C5N		C5		7204B P0	
FK20_C3N		C3		7204A P5	
FK25_C7		FK25		Black Oxide	C7
FK25B_C7			C7		7205B P0
FK25_C5	C5		7205A P0		
FK25B_C5	C5		7205B P0		
FK25_C3	C3		7205A P5		
FK25_C7N	Electroless Nickel Plating		C7	7205A P0	
FK25B_C7N			C7	7205B P0	
FK25_C5N			C5	7205A P0	
FK25B_C5N			C5	7205B P0	
FK25_C3N			C3	7205A P5	
FK30_C7	FK30	Black Oxide	C7	7206A P0	
FK30B_C7			C7	7206B P0	
FK30_C5			C5	7206A P0	
FK30B_C5			C5	7206B P0	
FK30_C3			C3	7206A P5	
FK30_C7N			Electroless Nickel Plating	C7	7206A P0
FK30B_C7N		C7		7206B P0	
FK30_C5N		C5		7206A P0	
FK30B_C5N		C5		7206B P0	
FK30_C3N		C3		7206A P5	



Black Oxide (Application : General case)



Electroless Nickel Plating (Application : Clean room)

(Note) :

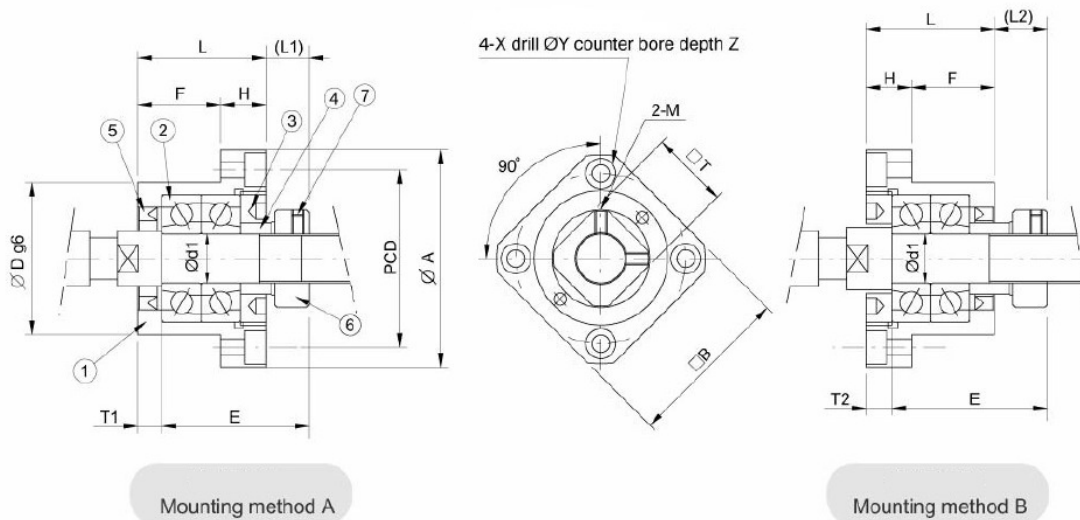
1. (Using angular contact ball bearings without preload for C7 types Support Units , and Max. axial clearance is 0.018mm.)
2. (Bearings make Preload for C5 type support units , and Axial clearance is 0 mm..)
3. (All of bearings use Japanese brand bearings.)
4. (The standard type is without Q , if required please advise in advance.)

Support Unit FK (fixed-side round type)



Part No.	Part name	Qty
1	Housing	1
2	Bearing	1 set
3	Holding lid	1
4	Cellar	2
5	Seal	1
6	Lock nut	1 set
7	Hexagon socket-head Selscrew(with set piece)	2

FK05~FK08



Mounting method A

Mounting method B

Unit : mm

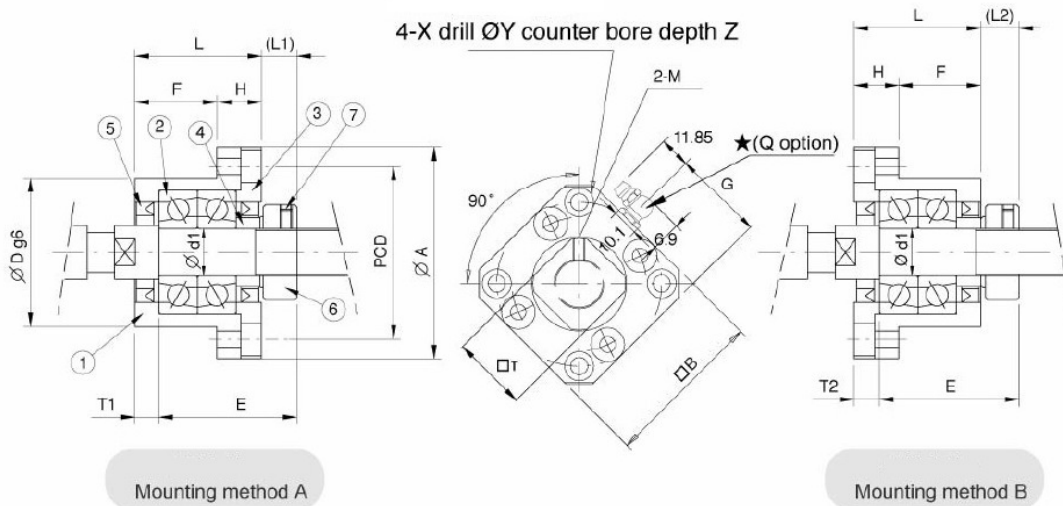
Model No.	Shaft diameter d1	L	H	F	E	Dg6	A	PCD	B	Mounting method A		Mounting method B		X	Y	Z	M	T	
										L1	T1	L2	T2						
FK05	5	16.5	6	10.5	18.5	20	-0.007 -0.02	34	26	26	5.5	3.5	7	5	3.4	6.5	4	M3	11
FK06	6	20	7	13	22	22	-0.007 -0.02	36	28	28	5.5	3.5	8.5	6.5	3.4	6.5	4	M3	12
FK08	8	23	9	14	26	28	-0.007 -0.02	43	35	35	7	4	10	7	3.4	6.5	4	M3	14

Support Unit FK (fixed-side round type)



Part No.	Part name	Qty
1	Housing	1
2	Bearing	1 set
3	Holding lid	1
4	Collar	2
5	Seal	2
6	Lock nut	1 set
7	Hexagon socket-head Setscrew (with set piece)	2

FK10~FK30



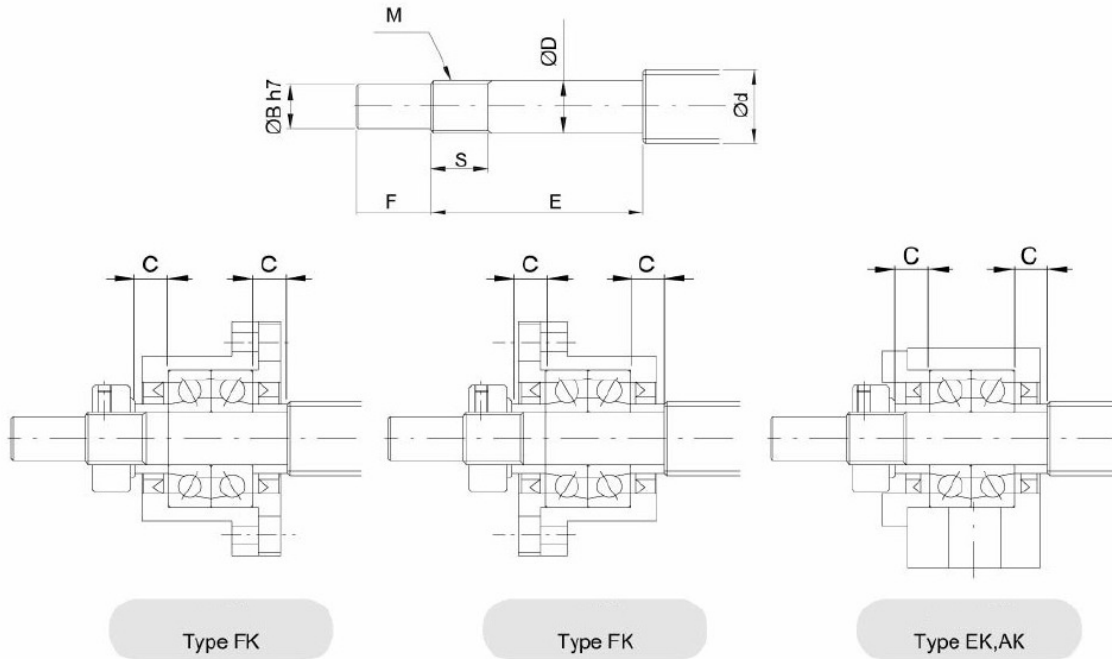
Mounting method A

Mounting method B

Unit : mm

Model No.	Shaft diameter d1	L	H	F	E	Dg6	A	PCD	B	Mounting method A		Mounting method B		X	Y	Z	M	T	G	Q
										L1	T1	L2	T2							
FK10	10	27	10	17	29.5	34 -0.009 -0.025	52	42	42	7.5	5	8.5	6	4.5	8	4	M3	16	-	-
FK12	12	27	10	17	29.5	36 -0.009 -0.025	54	44	44	7.5	5	8.5	6	4.5	8	4	M4	19	-	-
FK15	15	32	15	17	36	40 -0.009 -0.025	63	50	52	10	6	12	8	5.5	9.5	6	M4	22	-	-
FK17	17	45	22	23	47	50 -0.009 -0.025	77	62	61	11	9	14	12	6.6	11	10	M4	24	-	-
FK20	20	52	22	30	50	57 -0.010 -0.029	85	70	68	8	10	12	14	6.6	11	10	M4	30	34	M6
FK25	25	57	27	30	60	63 -0.010 -0.029	98	80	79	13	10	20	17	9	15	13	M5	35	39	M6
FK30	30	62	30	32	61	75 -0.010 -0.029	117	95	93	11	12	17	18	11	17.5	15	M6	40	46	M6

Recommended shaft end shape(Fixed-side)
for Support Units types FK,EK,AK



Unit : mm

Support unit model No.			Ballscrew shaft OD	Shaft support portion OD			Metric screw thread			Length of Sleeve	
Type FK	Type EK	Type AK	d	D		B	E	F	M	S	C
FK05	EK05	-	8	5	-0.005 -0.012	4	25	6	M5×0.5	7	3.5
FK06	EK06	-	8	6	-0.005 -0.012	4	28	8	M6×0.75	8	5
FK08	EK08	-	10/12	8	-0.005 -0.012	6	32	9	M8×1	10	5.5
FK10	EK10	AK10	12/14/15	10	-0.005 -0.012	8	36	15	M10×1	11	5.5
FK12	EK12	AK12	14/15/16	12	-0.005 -0.012	10	36	15	M12×1	11	5.5
FK15	EK15	AK15	18/20	15	-0.005 -0.014	12	47	20	M15×1	13	10
FK17	-	-	20/25	17	-0.005 -0.014	15	58	23	M17×1	15	10
FK20	EK20	AK20	25/28/30	20	-0.005 -0.014	17	62	25	M20×1	17	11
FK25	-	-	30/32/36	25	-0.005 -0.014	20	76	30	M25×1.5	20	15
FK30	-	-	36/40	30	-0.005 -0.015	25	72	38	M30×1.5	25	9

Reference of Axial load of fixed-side type support units

Model No.		Bearing	Static load (Kgf)	Allowable Axial load (Kgf)	Limiting RPM (RPM)
FK06	EK06	706	93	74	
FK08	EK08	708	129	103	
BK10	AK10	7000A	239	195	16800
FK10	EK10				
BK12	AK12	7001A	276	217	15400
FK12	EK12				
BK15	AK15	7002A	321	240	13300
FK15	EK15				
BK17	FK17	7203A	556	413	11200
		7203B	523	490	7700
BK20		7004A	622	428	10500
FK20	AK20	7204A	770	587	9100
	EK20	7204B	710	691	6650
BK25	FK25	7205A	964	709	8400
		7205B	881	820	5950
BK30	FK30	7206A	1388	939	7000
		7206B	1268	1082	4970
BK35		7207B	1714	1466	4200
BK40		7208B	2145	1834	3710